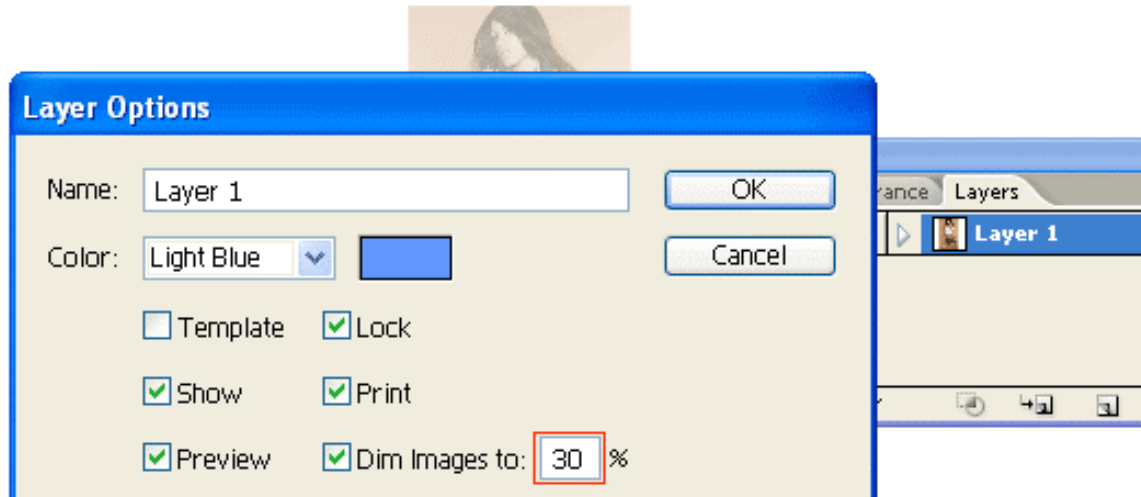


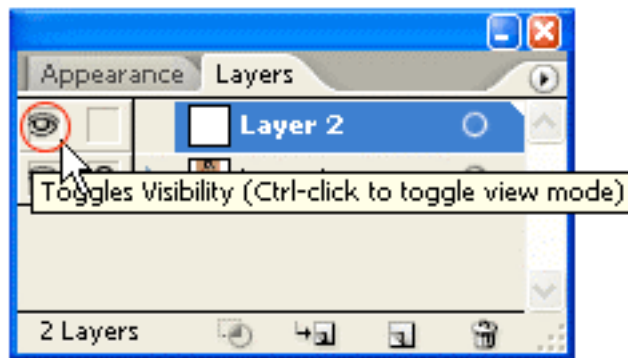
1. PLACE A PHOTO

First place a photo in Layer 1 by **File > Place** or Copy & Paste from clip board. Double click on Layer 1 to change the **Layer Options**. Set Dim Images to: 30% and lock layer.



2. START TRACING

Make a new layer (Layer 2). Hold down Ctrl key and click on the eye icon of Layer 2 to view Layer 2 in Outline mode.



Use the Pen Tool and start tracing the basic features of the girl. While you are tracing, there are couple shortcut keys you should know in order to work more faster.

These shortcuts are:

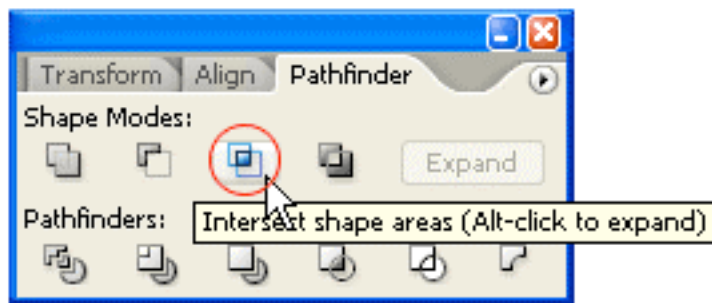
- **Ctrl+[** = Send Backward (This will send object back 1 step)
- **Ctrl+] =** Bring Forward (This will bring object front 1 step)
- **Ctrl+Shift+[** = Send to Back (This will send object all the way to the back)
- **Ctrl+Shift+] =** Bring to Front (This will bring object all the way to the front)

- **Ctrl+F** = Paste in Front (This will paste object in front with same position)

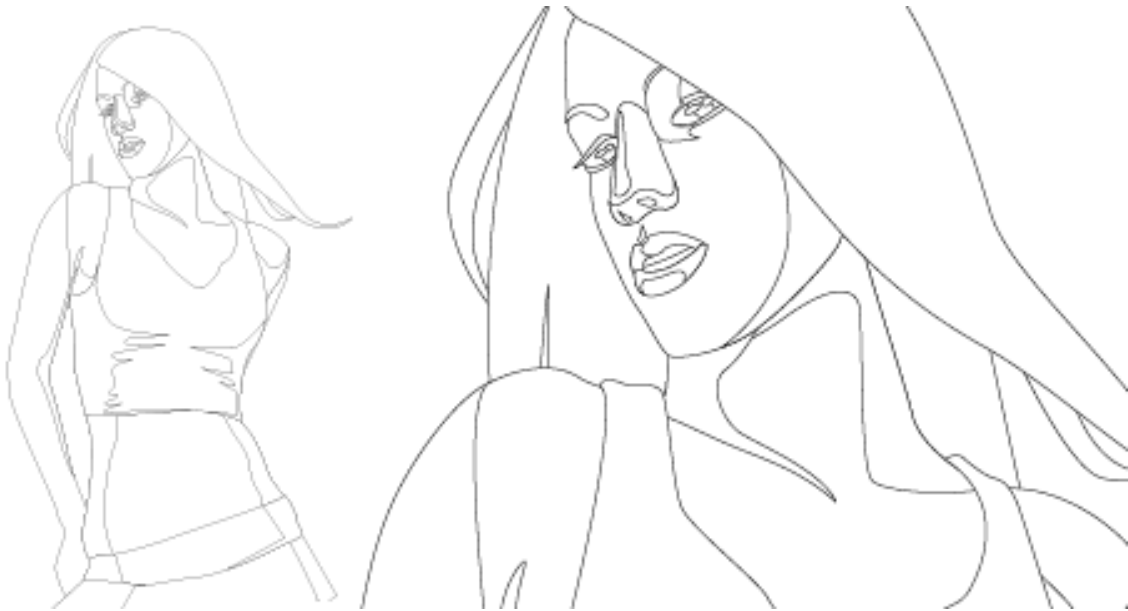


3. MAKE SHADOW

Draw a new path as shown (top). Then **Copy** the base path of the face and **Paste in Front**. Select the copied base path and the new path, open your **Pathfinder**, Alt-click on **Intersect shape areas**.

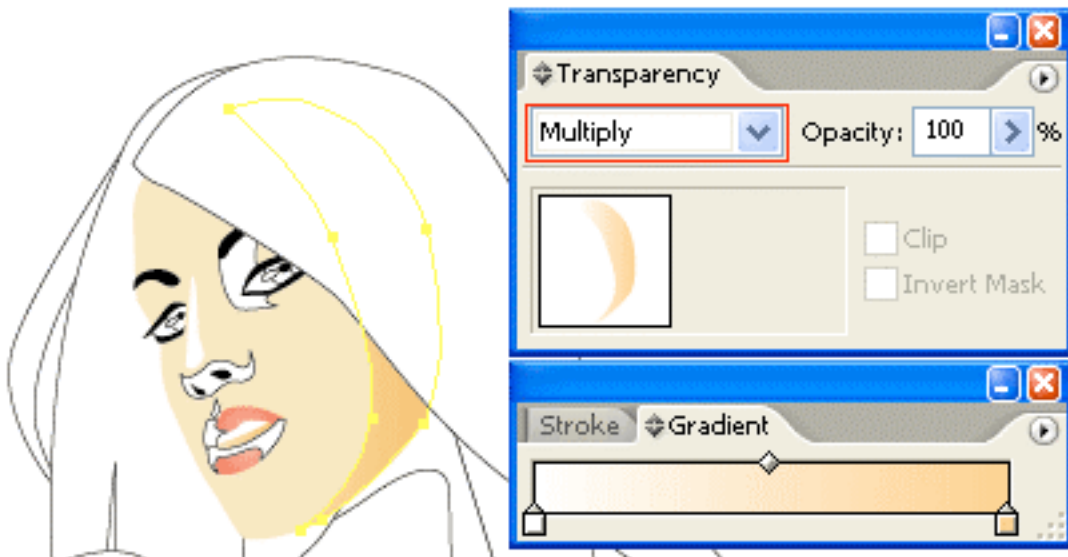


Use the same technique from previous step and make all shadow paths for the overall illustration. You don't have to get into the details yet, one simple shadow path of each part is good enough (ie. eye, lips, shirt, body, etc). Remember to use **Ctrl+C** for copy; and **Ctrl+F** to paste object in front. Trust me, this will save you a lot of time!



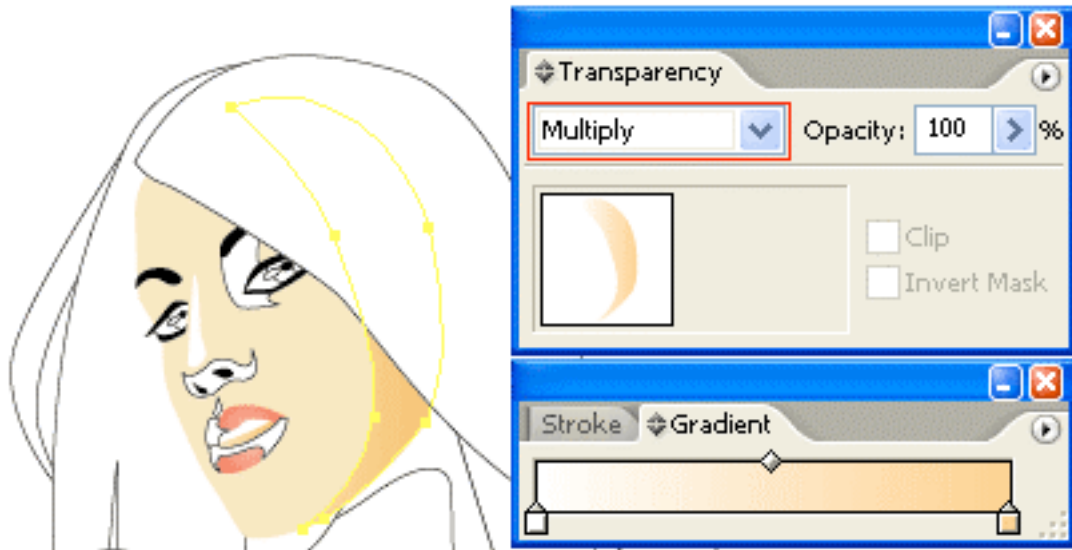
4. FILL IN BASE COLOR

Now fill in the base color for the face, eye, lips, and eyebrow.



5. SHADOW GRADIENT

Fill the shadow path of the face with a Gradient (white-skin tone) and select **Multiply** for Blending Mode.



Select the other shadow paths and use the **Eyedropper Tool** to copy the gradient fill of the main shadow path.



For the lip and eye shadow, use the **Eyedropper** to copy the base fill and select **Multiply Blending Mode**.

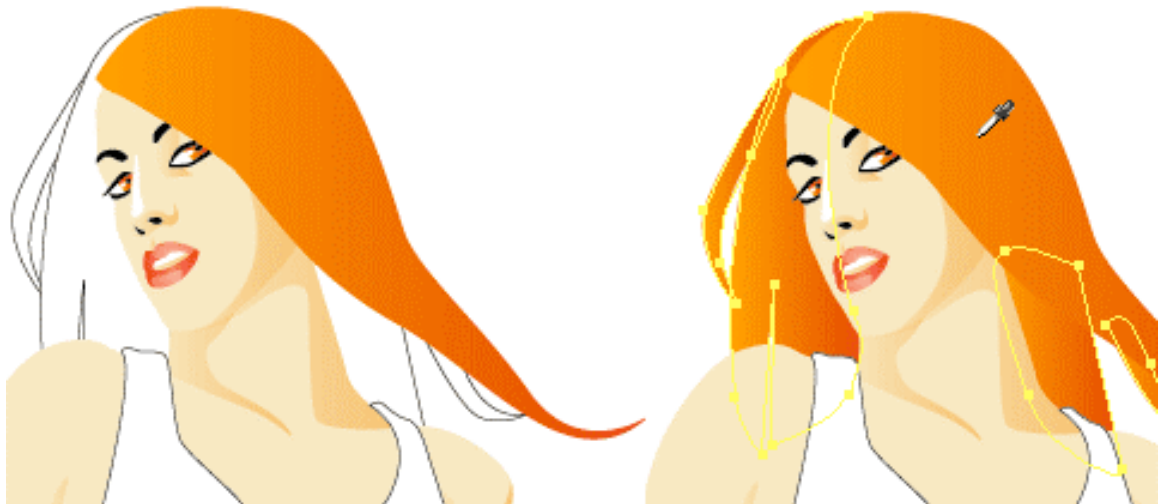
6. BODY

Use the same technique, copy the gradient fill for the body. Note you might to adjust the gradient of each shadow path to blend in with the overall illustration.



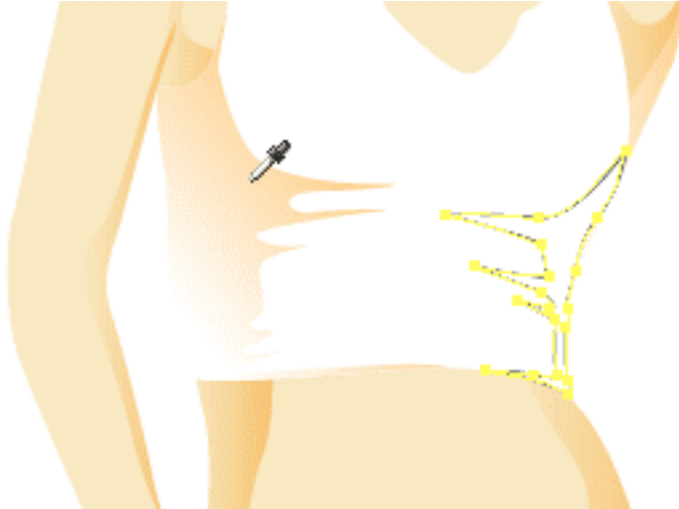
7. HAIR

Pretty much the same, fill 1 path with the gradient, then use the **Eyedropper Tool** to copy the fill.



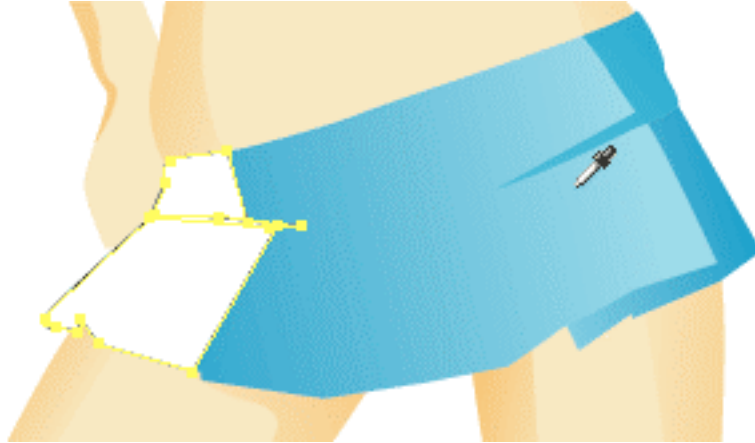
8. SHIRT

Same technique as the previous steps.



9. SKIRT

Fill the skirt with a blue gradient, then use the **Eyedropper Tool** to copy the fill for the shadow.



10. HAIR DETAILS

Now you can add more details to the hair. Make shadow effect by adding Multiply paths. Add some highlights by using lighter gradient color. If you want, you can add more details to the clothes, lips, or add a cool tattoo on her body.



FINAL



After you get used to this tracing technique, you can basically trace anything!

MORE SAMPLES

Here are some samples traced from photoS using the same technique.

